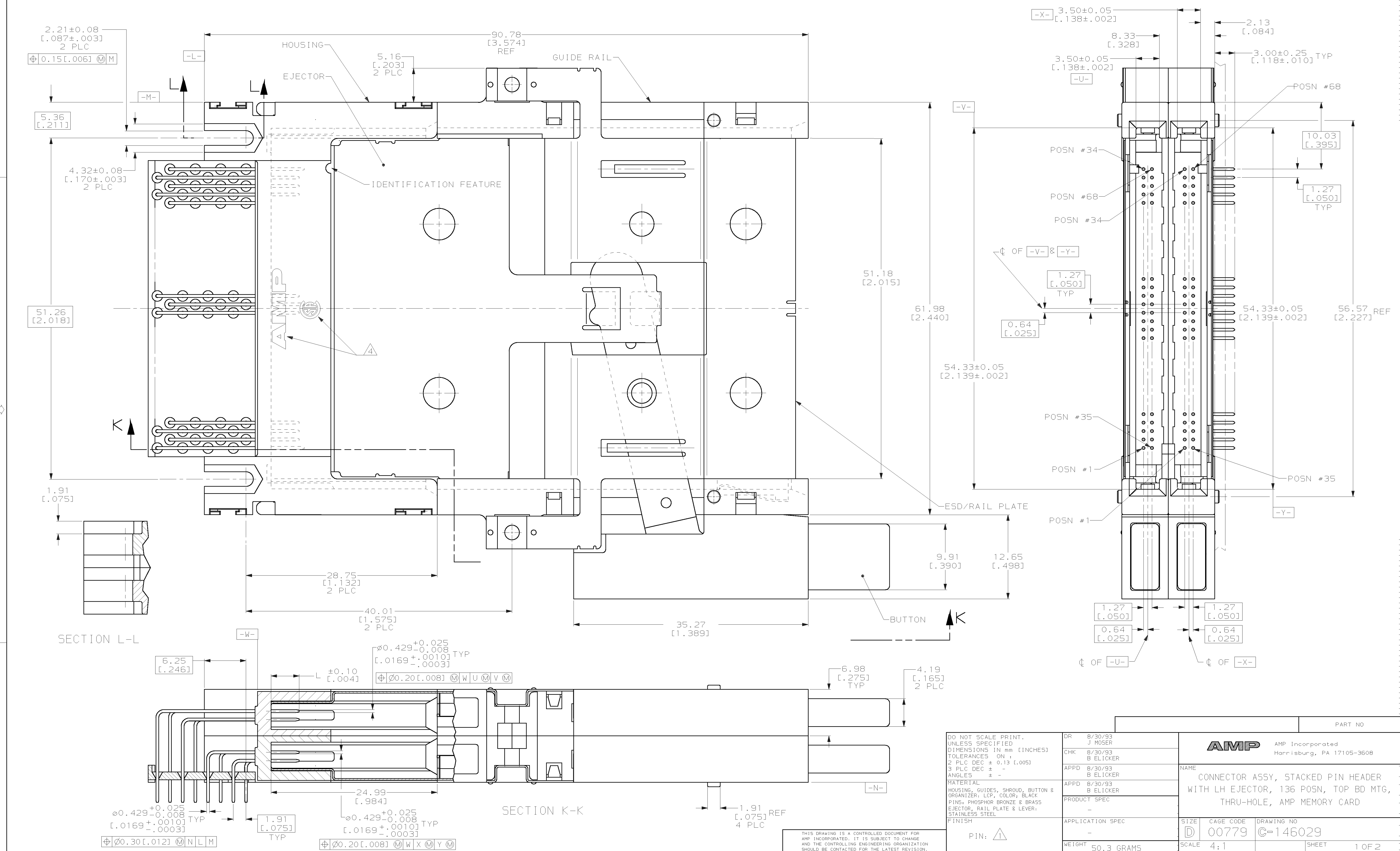


LOC		DIST		REV		ZONE		LTR		REVISIONS			
AD	00	P	F							DESCRIPTION	DATE	APPD	
										C	REV PER EC 0512-0473-02	05MAR03	BW



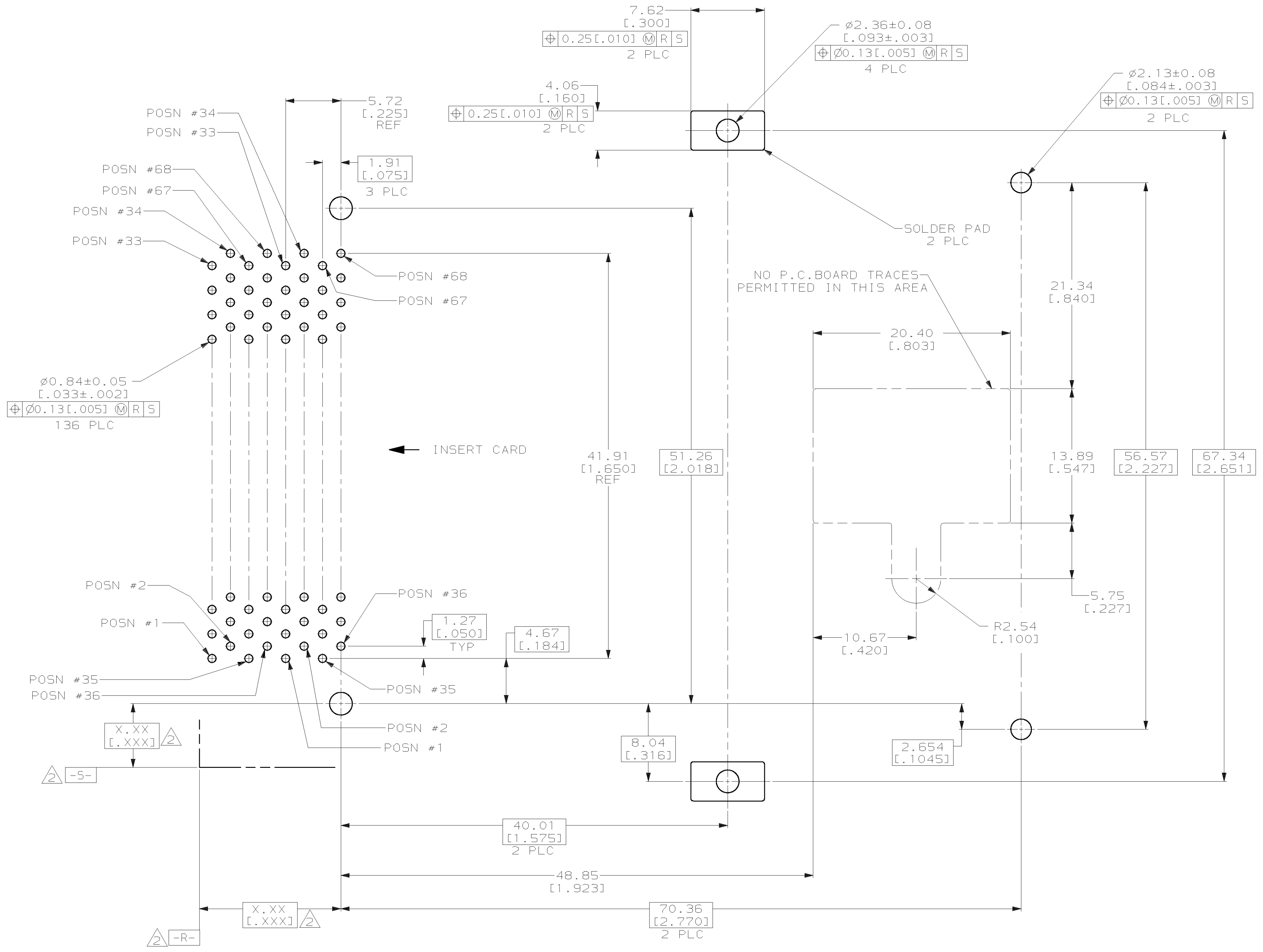
DO NOT SCALE PRINT.
 UNLESS SPECIFIED
 DIMENSIONS IN mm [INCHES]
 TOLERANCES ON:
 2 PLC DEC ± 0.13 [.005]
 3 PLC DEC ± -
 ANGLES ± -
 MATERIAL
 HOUSING, GUIDES, SHROUD, BUTTON &
 ORGANIZER: LCP, COLOR; BLACK
 PINS: PHOSPHOR BRONZE & BRASS
 EJECTOR, RAIL PLATE & LEVER:
 STAINLESS STEEL
 FINISH
 PIN:

DR	8/30/93 J MOSER
CHK	8/30/93 B ELICKER
APPD	8/30/93 B ELICKER
APPD	8/30/93 B ELICKER
PRODUCT SPEC	-
APPLICATION SPEC	-
WEIGHT	50.3 GRAMS

PART NO		AMP Incorporated Harrisburg, PA 17105-3508	
NAME CONNECTOR ASSY, STACKED PIN HEADER WITH LH EJECTOR, 136 POSN, TOP BD MTG, THRU-HOLE, AMP MEMORY CARD			
SIZE	CAGE CODE	DRAWING NO	
D	00779	C-146029	
SCALE	4:1	SHEET	1 OF 2

THIS DRAWING IS A CONTROLLED DOCUMENT FOR AMP INCORPORATED. IT IS SUBJECT TO CHANGE AND THE CONTROLLING ENGINEERING ORGANIZATION SHOULD BE CONTACTED FOR THE LATEST REVISION.

LOC		DIST		P		F		ZONE		LTR		REVISIONS			
AD	00											DESCRIPTION	DATE	APPD	
												C	SEE SHEET ONE	-	-



- 1 0.00076 [0.00030] MINIMUM GOLD IN CONTACT AREA, 0.00381 [0.00150] MIN TIN-LEAD ON SOLDER TAILS, ALL OVER 0.00127 [0.00050] MINIMUM NICKEL
- 2 DATUMS AND BASIC DIMENSIONS ESTABLISHED BY CUSTOMER
- 3 CONNECTOR REQUIRES USE OF 4 - SIZE 2M SCREWS FOR FASTENING TO PRINTED CIRCUIT BOARD
- 4 RECESSED AMP AND CSA LOGOS LOCATED ON BOTH SIDES OF HOUSINGS.
- 5 ASSEMBLY KEYED FOR 5 VOLT CARDS.
- 6 ASSEMBLY KEYED FOR LOW VOLT CARDS (3.3V).

RECOMMENDED BOARD LAYOUT

6	1, 17, 34	ALL OTHER PINS	36, 67	146029-2
	35, 51, 68	ALL OTHER PINS	36, 67	146029-1
5	5.0	4.25	3.5	
	[.197]	[.167]	[.138]	
"L" (PIN LENGTH) AND LOCATION				PART NO

DO NOT SCALE PRINT. UNLESS SPECIFIED DIMENSIONS IN mm [INCHES] TOLERANCES ON : 2 PLC DEC ± 0.13 [.005] 3 PLC DEC ± - ANGLES ± -	DR 8/30/93 J MOSER CHK 8/30/93 B ELICKER APPD 8/30/93 B ELICKER	AMP AMP Incorporated Harrisburg, PA 17105-3508 NAME CONNECTOR ASSY, STACKED PIN HEADER WITH LH EJECTOR, 136 POSN, TOP BD MTG, THRU-HOLE, AMP MEMORY CARD		
MATERIAL	APPD 8/30/93 B ELICKER PRODUCT SPEC			
FINISH	APPLICATION SPEC	SIZE	CAGE CODE	DRAWING NO
		D	00779	C=146029
WEIGHT		SCALE	4:1	SHEET 2 OF 2

THIS DRAWING IS A CONTROLLED DOCUMENT FOR AMP INCORPORATED. IT IS SUBJECT TO CHANGE AND THE CONTROLLING ENGINEERING ORGANIZATION SHOULD BE CONTACTED FOR THE LATEST REVISION.